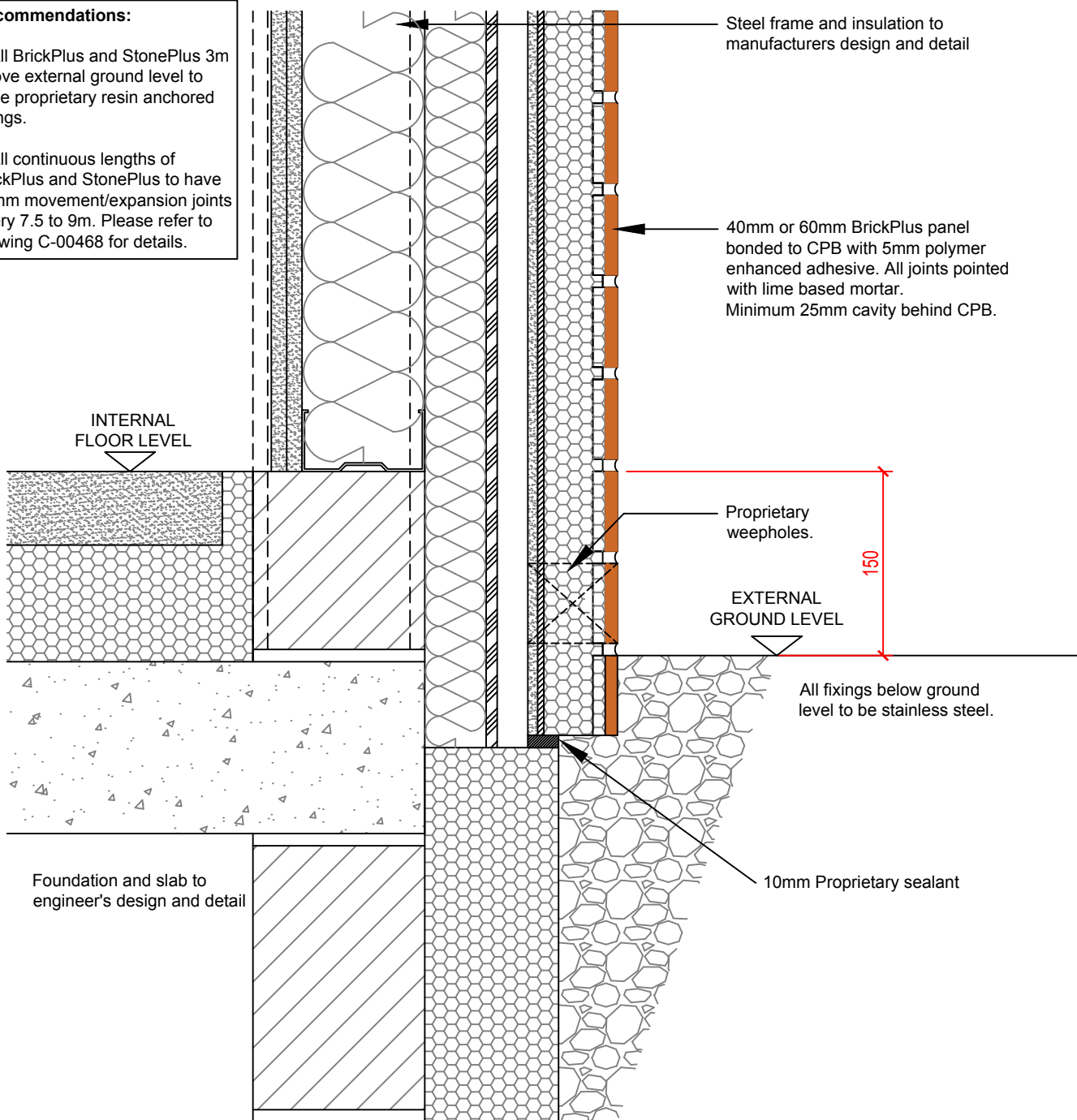


Recommendations:

- All BrickPlus and StonePlus 3m above external ground level to have proprietary resin anchored fixings.

- All continuous lengths of BrickPlus and StonePlus to have 10mm movement/expansion joints every 7.5 to 9m. Please refer to drawing C-00468 for details.



DO NOT SCALE

The information on this drawing is given in strict confidence, and remains the property of Monolith Brick & Stone Limited. No unauthorised copying or re-distribution is permitted.

Where drawings are project specific, the quantities, dimensions, and details of our products are estimated based upon information provided by the client. Monolith Brick & Stone Ltd. will not, under any circumstances be liable for any inaccuracies in the supplied drawings, specifications and/or quantities. These should be verified by the client, or an appropriate agent as no guarantee as to the suitability for the project is offered.

This should be read in conjunction with our standard Terms & Conditions available on request or from www.monolith.build

Rev.	Description	By	Date
A	1st Issue	NC	09.10.14
B	Cavity increased, DPC & Notes added	NC	15.12.14
C	DPC added, Expansion joint note amended	NC	31.07.15
D	Cavity amended to 25mm	NC	11.08.16
E	DPC omitted and notes amended	NC	23.05.17
F	Drawing Template updated	SRB	12.04.18



MONOLITH

Monolith Brick & Stone Ltd.
Unit 34 - Llys Edmund Prys - St. Asaph Business Park
St. Asaph - Denbighshire - LL17 0JA

+44(0)1745 535855 - email: info@monolith.build

Title
BrickPlus Eco Panels - Steel Frame
Ground Level Details

Project
Typical Details

Scale
N.T.S.

Material
-

Job No.
Standards

Drawing number

E-00342